



Equipments for Corrugated Cardboard and Carton Box Making Machine  
Manufacturer of Ceramic Anilox Rolls

<http://www.tcy.com>

# FLEXO / CORRUGATOR

# COMPANY SUMMARY

Founded in 1959, Tien Chin Yu Machinery Mfg. Co., Ltd (TCY) is one of the top 10 corrugated industry machine suppliers with worldwide service network. TCY supplies best quality of fully automatic computerized Corrugated Paper Machine and Printer Slotter to various customers over 70 countries. TCY produces comprehensive range of converting equipment, with flexo folder gluer and printer slotter in sizes from mini 660mmx1800mm up to Jumbo size width 2200mmx5500mm.

TCY never cease innovation, products like “Vacuum Transfer Device”, “Ink Chamber Blade System”, “Folder Gluer”, “Integrated Computer Production System (non-stop order change)” are all self-designed to enhance machinery function. In Taiwan, first Flexo Printer Slotter was made by TCY in 1978. After seven years, first Automatic Folder Gluer machine was produced. In 1996, TCY manufactured first set of Corrugator Line and Automatic Slitter Scorer. Four years later, first set of Jumbo Flexo Printer Slotter was innovated by TCY in Asia market. And in 2007, TCY completed first set of Up Folding and Top Loading Counter Ejector in Asia.



- High performance products for customer's needs , not in the pursuit of profit.
- Strong procurement strategies to source the materials , not to price as the main purpose.
- Manufacturing capacity and utilization; not to enhance the conditions for inappropriate high speed.
- Business services committed to precision and efficiency; not to be a state of total confusion with no order.

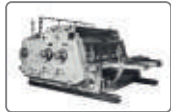
General Manager  
Ken Hsiao

# EVOLUTION



1959

- Established Tien Chin Enterprise Organisation at Zhi Feng Street in Taipei City.
- Specialized manufacture of Manual Slotter and offered maintenance service to customer.
- Factory floor area: 120 m<sup>2</sup>



1968

- Tien Chin Enterprise Organisation moved to Liuo Zhang Street in San Chong city.
- Due to the change of market demand, Tien Chin Enterprise continue to research and develop machines:  
(1) Longway Oil Base Printer  
(2) Longway Flexo Printer Slotter  
(3) Eccentric Slotter  
(4) Rotary Slitter Scorer
- Factory floor area: 240 m<sup>2</sup>



1970

- Officially established Tien Chin Yu Machinery Manufacture Company Limited.



1973

- Due to production increment and expansion of factory building, there was further requirement of working space, therefore factory was moved to Liou Fu Road, Lu Chu Shiang in Tao Yuan Shiang.
- Factory floor area: 2000 m<sup>2</sup>



1978

- Self-innovation and manufactured the first Flexo Printer Slotter in Taiwan.
- Expansion of the factory building, factory floor area: 3000 m<sup>2</sup>



1980

- Self-innovation and manufactured the first set of Corrugator Line.
- TCY Signed Agency contract with ID Machinery in Britain.



1984

- Self-innovation and manufactured the first Auto Slitter Scorer (Double Blade).
- Expansion of the factory building, factory floor area: 4000 m<sup>2</sup>



1985

- Self-innovation the first Automatic Folder Gluer machine in Taiwan.



1986

- Expansion of the factory building, factory floor area: 5000 m<sup>2</sup>



1988

- First upgrade of product, align with technological cooperation with JEC, Japan which has greatly improved the entire production efficiency of the Corrugator Line.
- The production line of corrugated cardboard sales volume rapidly grew.
- Expansion of the building, factory floor area: 7000 m<sup>2</sup>



1990

- Second upgrade of product, with the combination of Technological Cooperation with SAMWA, Japan, produced the first set of Automatic Down Stacker for Corrugator Line (DSTK)
- Mr. Takada Isii from Tomoku Company in Japan holds a post in one of the 3 paper factories in the early days. He started as a basic chief office clerk. After 40 years of work experience, he was promoted as Managing Director. During that period, he managed 18 factories of Tomoku Company.
- While working at Tomoku Company, Mr. Takada worked in cooperation with SANWA and MITSUBISHI and developed Auto Down Stacker for Corrugator Line use. Based on Mr. Takada 40 years of experience in the Corrugated Box industry, TCY appointed and offered high salary to Mr. Takada Isii as Senior consultant, specialized in reforming and innovating design, improvement on product quality and precision of the machine.
- Sold 6 sets of Corrugator Line, 28 sets of Flexo Printer Slotter to SDM, Inda Kia Pulp and Paper Group in Indonesia, with excellent sales result, TCY astonished the world.



1993

- Signed Agency contract with NEXT Company. Expansion the American and Australian Market (Cooperation with NEXT ended in 1997). Machines sold to the following groups during Cooperation with NEXT:  
(1) Visyboard Pty Ltd.  
(2) Pratt Industries (U.S.A)  
(3) Smurfit Group
- According to the change of global market demand, we have amended the mechanical structure of Flexo Machine in order to improve production speed and quality.



1994

- Manufactured the second generation 6PA Flexo Printer Slotter machine, size 1200 x 2750 mm
- Manufactured the second generation 8PA Flexo Printer Slotter, size 1600 x 3000 mm
- For the very first time, TCY flew abroad to participate in the Corrugated Exhibition in Paris, France 1994. Exhibited TCY second generation Flexo Printer Slotter machine, TCY entered into the international market.



1995

- TCY was the first company to use SUN Lead Edge Feeder among the whole Asia's paper machinery manufacture industry.
- Sold 6 sets of Corrugator Line and 5 sets of Flexo Printer Slotter to Ting Hsin International Group in China.



1996

- Manufactured the second generation 5PA Flexo Printer Slotter, size 1000 x 2500 mm
- Manufactured the second generation 9PA-FG Flexo Printer Slotter, size 660 x 1800 mm
- Manufactured the first set of Corrugator Line and Automatic Slitter Scorer (Single Blade). (Machine was sold to Ying Cheng Paper Industry in Miao Li County).
- First time participated in the Super Corr Exhibition in Atlanta 1996.
- TCY participated in the ASIA Corrugated Exhibition in Singapore 1996.



1997

- Signed Agency contract with United Container Machinery Company (Cooperation with the company ended in 2000) During cooperation with United Company, Flexo Printer Slotter machines were sold to U.S.A, Mexico and Canada.
- Sold 6 sets of Flexo Printer Slotter to SDM, Inda Kia Pulp and Paper Group in Indonesia. SDM continued to purchase machinery from TCY.



1998

- Employment of retired and senior electrical engineer from Langston, based on his experience and technique, improved the corporate image of the company and lead TCY to globalization.
- TCY participated in the Corrugated Exhibition in Paris, France 1998.
- TCY participated in the Seoul International Food technology Exhibition 98.



1999

- One of the shareholder announced to withdraw shares from Tien Chin Yu Machinery Manufacture Company Limited, as a result, shares of the company were reorganized.
- Recognition and approval of ISO-9001
- Factory floor area: 30,000 m<sup>2</sup>



2000

- Manufacture first set of Jumbo Flexo Printer Slotter in Asia, size 2200 x 5200 mm, machine was sold to Visy board in Australia.
- TCY participated in the Super Corr Exhibition in Atlanta, USA 2000 Exhibited the first set of Jumbo Flexo Printer Slotter, size 2200 x 5500 mm, machine was sold by United Container Machinery Industry.



2001

- Through an American company, TCY purchased Corrugator and Flexo blueprint papers from Langston. Unfortunately, the plan was terminated in the same year, and caused critical loss to the company.
- Former General Manager emptied company's funds, stole mechanical drawings, destroyed computer system, separately reorganized his own company, lure senior staff to leave TCY and join his company. False notices were sent to Customers informing them that TCY has gone bankruptcy and lead to the cancellation of orders. Sales Department became paralyzed which caused serious impact to the image and reputation of the company.



2002

- The new General Manager reformed the company's structure, lead and managed a new group of Sales Department to stage a new comeback, restart to run the business again.
- In order to reconstruct the company image, the new General Manager insisted on participated in the Corrugated Exhibition in Paris, in order to re-establish the company's position in the market. TCY took this opportunity to participate in the Corrugated Exhibition after the incident.
- TCY wanted to prove to the world of its strength and sustainability in the Corrugated industry. Machine exhibited statically during the show: 8PA Rotary Die Cutter Size: 1600 x 3000 mm, Space of the exhibition booth: 250 m<sup>2</sup>





2003

- First time participated in the Sino Corrugated Exhibition in Shanghai, China 2003. Exhibited 6PA Flexo Machine (Speed: 280 sheet/min) For the first time, TCY ran the machine and boxes were displayed during the exhibition show. Floor area of the booth: 108 m<sup>2</sup>
- Signed agency contract with SIE, a sales prelude of TCY machine in the Spanish market.
- In order to improve mechanical performance and quality of the machine, TCY made a complete examination of the machine's mechanical and electrical problems. TCY made further step to renovate the machine as a first step to establish its place in the Corrugated industry.



2004

- TCY participated in the Super Corr Exhibition in Atlanta, U.S.A 2004.
- TCY have decided to undertake with further redesign and redevelopment of the Folder Gluer and Counter Ejector Unit.



2005

- TCY participated in the Sino Corrugated Exhibition in Shanghai, China 2005. Exhibited machines: 6PA-FG (Speed:250 sheet/min.); 9PA-FG (Speed:350 sheet/min.) TCY broke the world record for being the first company to exhibit 2 running Flexo Folder Gluer and production of boxes during an exhibition.
- Apparently it was a difficult task to install 2 sets of Folder Gluer with different sizes within such limited days as provided. But somehow TCY have spirits of overcoming the difficult challenge. We TCY successfully completed and installed 2 sets of Folder Gluer within 3 days.
- Area of the booth: 784 m<sup>2</sup>
- Recognition and approval of International CE Certificate.



2006

- Completed the first new design - Down Folding with Top Loading Counter Ejector. (Model:FGT), speed 280 sheet/min.
- Due to high demand in the Corrugated market, for the third time, successfully sold one set of Corrugator Line, 5 sets of Flexo Printer Slotter to SDM, Inda Kia Pulp and Paper Group in Indonesia.
- First time participated in the Istanbul Packaging Exhibition in Turkey 2006.
- First time participated in the Tehran International Exhibition Express in Iran.
- First time participated in the Rosupak Exhibition in Russia 2006.



2007

- TCY completed the first set of Up Folding and Top Loading Counter Ejector in Asia (Model: UFGT, speed: 250 sheet/min). Machine was sold to Spain.
- TCY participated in the Sino Corrugated Exhibition in Shanghai, China 2007. Exhibited machine: 6PA-FGT (Speed: 280 sheet/min) Running machine and production of boxes during the exhibition show. Area of the booth:775 m<sup>2</sup>
- TCY participated in the Rosupak Exhibition in Russia 2007. For the very first time, TCY participated in the Rosupak Exhibition, Russia. TCY was also the only company to exhibit running machine and production of boxes at the exhibition show.
- Invested 3,000,000 U.S. dollars in two sets of Five Axis CNC Auto Machine Center from Japan in order to improve the production efficiency and precision of machining products. This is to ensure quality guarantee as always emphasis by TCY.
- In cooperation with Italian Company, purchased Auto Stitcher. Completed the first set of Jumbo Flexo Printer Slotter with Auto Stitcher and Top Loading Folder Counter Ejector in Asia. Sized 2200 x 5500 mm. Machine was sold to Spain. Due to satisfied with TCY machine.



2008

- Inflation of raw material price, the price of petroleum rose to 145 dollars/barrel, at the same time TCY faced the global financial Tsunami storm in the later stage. TCY adheres to conservative ideas, decided to slow down, non-arbitrary to receive orders, not pursue high purchased material, communicated with customer and even informed customer that it was not the right time for investment, trying to reduce the risk of investment of the customer. Step by step, made the company grow steadily and sustainability.
- In the same year, Five Axis CNC Machine Center was installed in TCY factory.



2009

- TCY participated in the Sino Corrugated Exhibition in Shanghai, China 2009. Exhibited machine: 9PA-FGT (Speed: 400 sheet/min) Running machine and production of boxes during the exhibition show.
- Area of the booth: 775 m<sup>2</sup>



2010

- TCY Participated in the Rosupak Exhibition in Russia 2010.



2011

- TCY Participated in the Rosupak Exhibition in Russia 2011. Exhibited machine: 9PA-9FGT (Speed: 24000 boxes/hour). Running machine and production of boxes during the exhibition show.
- Area of the booth: 252 m<sup>2</sup>



2012

- TCY Participated in the Rosupak Exhibition in Russia 2012.
- TCY Participated in the Super Corr Exhibition in Atlanta, U.S.A. 2012



2013

- TCY Participated in the CCE International Exhibition in Germany 2013. Exhibited machine: 9PA-9FGT (Speed: 24000 boxes/hour). Running machine and production of boxes during the exhibition show.
- Area of the booth: 422.5 m<sup>2</sup>
- TCY Participated in the Rosupak Exhibition in Russia 2013. Exhibited machine: 8PA-STK. Running machine and production of boxes during the exhibition show.
- Area of the booth: 270 m<sup>2</sup>



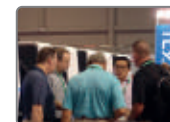
2014

- TCY Participated in the Istanbul Packaging Exhibition in Turkey 2014. Exhibited machine: 9PA-9FGT (Speed: 24000 boxes/hour) Running machine and production of boxes during the exhibition show.
- Area of the booth: 352 m<sup>2</sup>



2015

- TCY Participated in the CCE International for the Corrugated and Folding Carton Industry. Held in Munich Trade Fair Center, Germany. Our latest Q Series newest innovation 9PAQ QS-618 (speed: 24,000 boxes/hour) were display at the show. Visitors were able to gain comprehensive insight into our latest products and technologies, industry trends and development.



2016

- TCY participated at TAPPI SuperCorr Expo 2016 held in Orange Country Convention Center, Orlando, FL, United States. Our newest innovation 5PAQ QS-1025 (speed: 21,000 boxes/hour) were display at the show. Visitors are from companies across the globe of the corrugated paperboard industry.



2017

- TCY established a representative office with warehouse in Europe, Italy, Desenzano del Garda (BS) called: TCY EUROPE S.R.L. The official opening of the office is delayed due to COVID-19.



2018

- TCY established a representative office in the USA, Milwaukee called: TCY North America, Inc. The official opening of the office is delayed due to COVID-19, but the service engineers as well as agency are 100% functioning.



2019

- TCY participated at CCE International 2019 exhibition in Munich, Germany and Rosupak exhibition in Moscow, Russia.
- TCY completed work on the creation of a new line QS-850, which processes sheets up to 850x2200mm and maximum speed of up to 380 boxes per minute.



2020

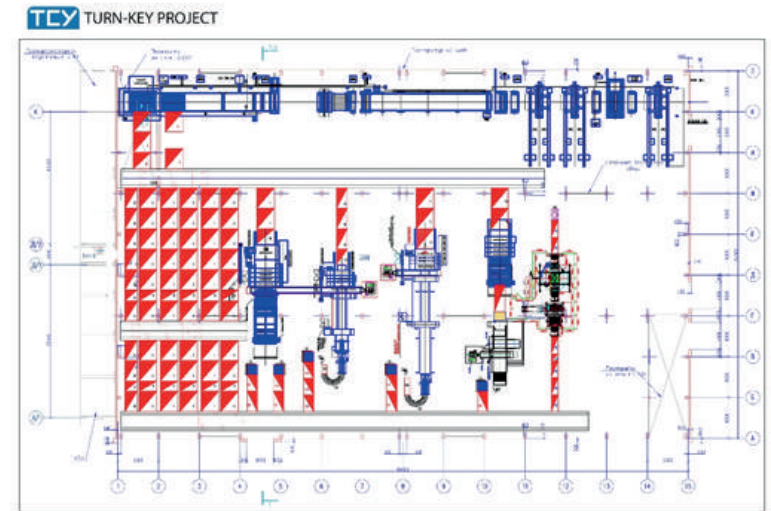
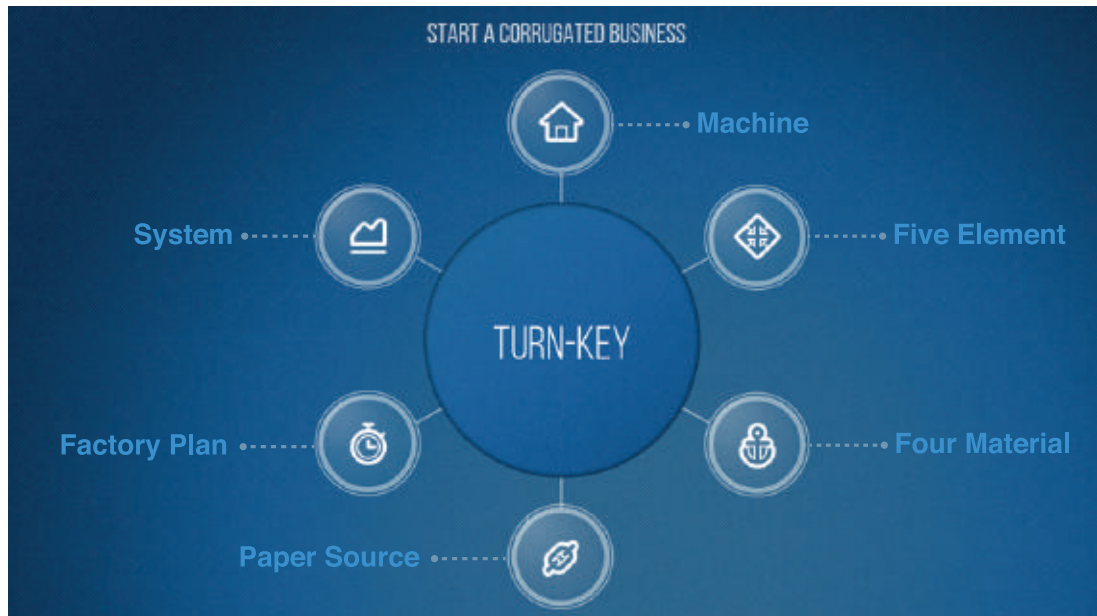
- TCY established a representative office in Great Britain, Leeds, Yorkshire called:TCY Machinery UK Ltd, with Rob Garvey, Managing Director and Steven Holliman, Service Manager.

# TURN-KEY PROJECT FOR STARTING A CORRUGATED BUSINESS

We offer full Turn-Key start-up corrugator and converting factory projects. One such outstanding project required a full corrugated box plant Turn-Key project.

TCY has 60 years of experience working exclusively in the corrugated industry. All that knowledge allowed us to plan, design and coordinate a greenfield factory build through to fully operational, highly-efficient corrugated board & converting factory.

To start a corrugated, we provide following Turn-Key solution:



## Machine:

- Full automation corrugated board making machine
- Flexo Folder Gluer (FFG)
- Flexo Rotary Die-Cutter (RDC)
- Comprehensive auxiliary equipment for corrugated production plant etc.

# PRODUCT THE REVOLUTION OF FIXED TYPE & DIRECT DRIVE SYSTEM FLEXO MACHINE

- Quick order change for non-stop production.
- High efficiency for short order.
- Full automation and smart control.

**660mm x 1800mm**  
**24000 sheet/hr**

**QS-618** FIXED TYPE/SERVO DRIVE



**1000mm x 2500mm**  
**21000 sheet/hr**

**QS-1025** FIXED TYPE/SERVO DRIVE



**1200mm x 2750mm**  
**15600 sheet/hr**

**QS-1227** FIXED TYPE/SERVO DRIVE

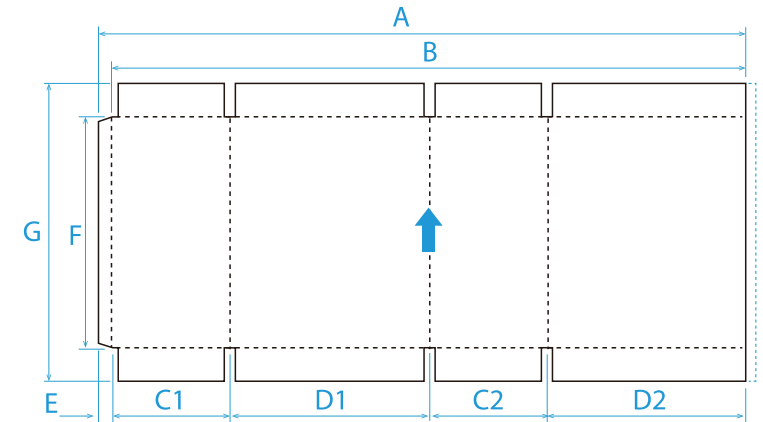


# SPECIFICATION

(T) =Top Print

(V)=Vacuum Transfer

Machine Speed varied is depending on sheet quality, sizes etc.  
TCY reserve the right to change specifications without notice.



	Model No.		QS-618	QS-1025	QS-1227
			(T)(V)	(T)(V)	(T)(V)
	Machine Size	IN.	27"x71"	42"x98"	50"x108"
		MM	660x1800	1000x2500	1200x2750
A	Finished Blank *Maximum for B+E	MAX.	1800	2500	2700
		MIN.	475	755	755
B	Printing Surface Length	MAX.	1750	2400	2630
C1=C2	Panel (Small)	MAX.	771	950	950
		MIN.	70	100	100
D1=D2	Panel (Large)	MAX.	821	950	950
		MIN.	115	205	175
D1+C2	Two Panels	MAX.	881	1225	1325
		MIN.	220	360	360
E	Glue Lap Width	MAX.	38	50	50
		MIN.	35	35	35
F	Box Height	MIN.	80	90	90
G	Sheet Width (standard regular feed)	MAX.	633	988	1100
		MIN.	220	250	310
	Sheet Width (Skip feed)	MAX.	660	1200	1200
	Max. Machine Speed (Sheet/Min)	MAX.	400	350	260



# PRODUCT THE RELIABILITY OF OPEN/CLOSE TYPE & PLANETARY GEAR TRANSMISSION SYSTEM FLEXO MACHINE

- Strong machine construction & easy maintenance.
- Full size range from mini to jumbo flexo machine for all dimensions.
- Top/bottom printing + lower/upper folding are available.

**1000mm x 2200mm**  
**1000mm x 2500mm**  
**16800 sheet/hr**

**N5/NB5** TOP/BOTTOM PRINTING



**1200mm x 2500mm**  
**1200mm x 2750mm**  
**1200mm x 3000mm**  
**15000 sheet/hr**

**N6/NB6** TOP/BOTTOM PRINTING





**1600mm x 4200mm**  
**9000 sheet/hr**



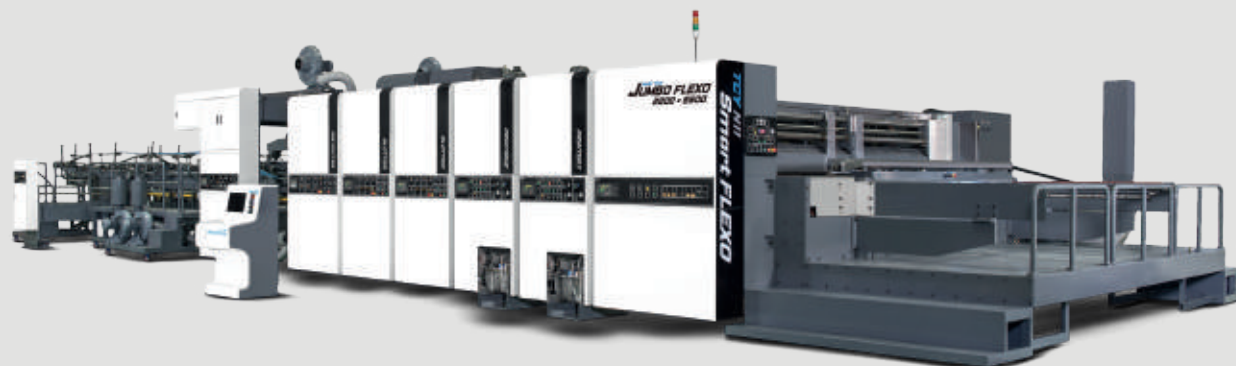
**NB8 RDC** BOTTOM PRINTING

**660mm x 1800mm**  
**24000 sheet/hr**



**N9** TOP PRINTING

**2200mm x 5500mm**  
**6000 sheet/hr**



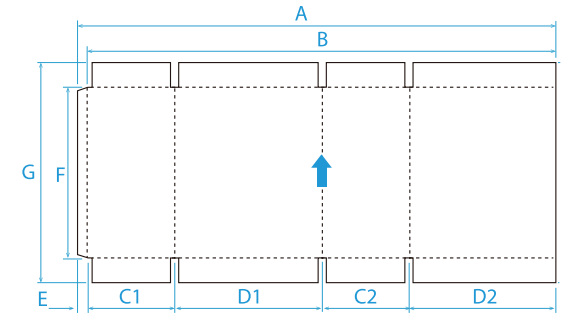
**N11** BOTTOM PRINTING

# SPECIFICATION

(T) =Top Print

(B) =Bottom Print

(V) =Vacuum Transfer



	Model No.		N9	N5	N5/NB5	N6/NB6	N6/NB6	N6/NB6	NB8	NB8
			(T)(V)	(T)(V)	(T)(B)(V)	(T)(B)(V)	(T)(B)(V)	(T)(B)(V)	(B)(V)	(B)(V)
	Machine Size	IN.	27"x71"	42"x87"	42"x98"	50"x98"	50"x108"	50"x118"	66"x87"	66"x102"
		MM	660x1800	1000x2200	1000x2500	1200x2500	1200x2750	1200x3000	1600x2200	1600x2600
A	Finished Blank *Maximum for B+E	MAX.	1800 (1800)	2200 (2200)	2500 (2500)	2500 (2500)	2700 (2700)	3000 (3000)	2200	2600
		MIN.	378 (475)	520 (755)	520 (755/915)	520 (755/915)	520 (755/915)	520 (755/915)	690	690
B	Printing Surface Length	MAX.	1750(1750)	2050(2050)	2400(2400)	2430(2430)	2630(2630)	2920(2920)	2100	2500
C1=C2	Panel (Small)	MAX.	771 (771)	900 (950)	1050 (950)	1050 (950)	1150 (950)	1300 (950)	815	1015
		MIN.	60 (70)	60 (100)	60 (100/120)	60 (100/120)	60 (100/120)	60 (100/120)	60	60
D1=D2	Panel (Large)	MAX.	821 (821)	1015 (950)	1165 (950)	1165 (950)	1265 (950)	1415 (950)	1005	1205
		MIN.	110 (115)	175 (175)	175 (175/240)	175 (175/240)	175 (175/240)	175 (175/240)	250	250
D1+C2	Two Panels	MAX.	881 (881)	1075 (1075)	1225 (1225)	1225 (1225)	1325 (1325)	1475 (1475)	1065	1265
		MIN.	170 (220)	235 (360)	235 (360/440)	235 (360/440)	235 (360/440)	235 (360/440)	310	310
E	Glue Lap Width	MAX.	38 (38)	50 (50)	50 (50)	50 (50)	50 (50)	50 (50)	70	70
		MIN.	(35)	(35)	(35)	(35)	(35)	(35)		
F	Box Height	MIN.	(80)	(90)	(90)	(90)	(90)	(90)		
G	Sheet Width (standard regular feed)	MAX.	633 (633)	988 (988)	988 (988)	1170 (1100)	1170 (1100)	1170 (1100)	1542	1542
		MIN.	190 (200)	250 (250)	250 (250)	310 (310)	310 (310)	310 (310)	365	365
	Sheet Width(Skip feed)	MAX.	840 (660)	1350 (1200)	1350 (1200)	1570 (1200)	1570 (1200)	1570 (1200)	2200	2200
	Max. Machine Speed (Sheet/Min)	MAX.	400 (400)	280 (280)	280 (280/250)	250 (250)	250 (250)	250 (250)	180 (150)	180 (150)

Machine Speed varied is depending on sheet quality, sizes etc.  
 TCY reserve the right to change specifications without notice.

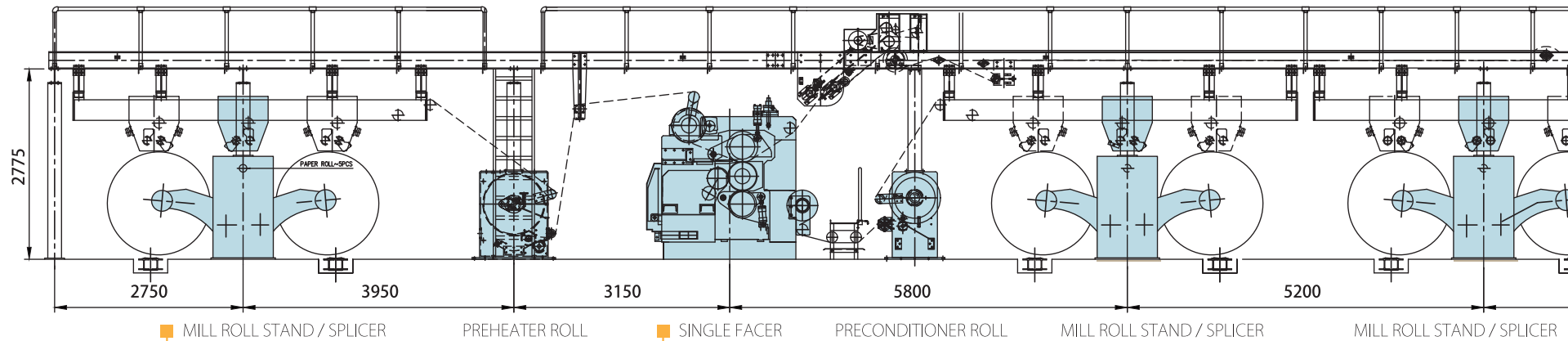
( ):The values in the brackets are the working dimensions for Flexo Folder Gluer & Counter Ejector Inline.  
 For mid-lines both Top or Bottom Print are available. The values indicated through the "/" sign mean the difference between Top and Bottom Printing (if any).

	Model No.		NB8	NB8	NB8	N11	N11	N11	N11
			(B)(V)	(B)(V)	(B)(V)	(B)	(B)	(B)	(B)
	Machine Size	IN.	66"x118"	66"x140"	66"x165"	89"x161"	89"x189"	89"x205"	89"x217"
		MM	1600x3000	1600x3600	1600x4200	2200x4100	2200x4800	2200x5200	2200x5500
A	Finished Blank *Maximum for B+E	MAX.	3000 (3000)	3600 (3600)	4200 (4200)	4010 (4010)	4710 (4710)	5110 (5110)	5410 (5410)
		MIN.	690 (940)	690 (940)	690 (940)	840 (1140)	840 (1140)	840 (1140)	840 (1140)
B	Printing Surface Length	MAX.	2900(2900)	3450(3450)	4100(4100)	4000(4000)	4700(4700)	5100(5100)	5400(5400)
C1=C2	Panel (Small)	MAX.	1215 (1165)	1490 (1440)	1815 (1765)	1670 (1605)	2020 (1955)	2220 (2155)	2370 (2305)
		MIN.	60 (150)	60 (150)	60 (150)	85 (150)	85 (150)	85 (150)	85 (150)
D1=D2	Panel (Large)	MAX.	1405 (1315)	1680 (1590)	2005 (1915)	1870 (1805)	2220 (2155)	2420 (2355)	2570 (2505)
		MIN.	250 (300)	250 (300)	250 (300)	285 (350)	285 (350)	285 (350)	285 (350)
D1+C2	Two Panels	MAX.	1465 (1465)	1740 (1740)	2065 (2065)	1955 (1955)	2305 (2305)	2505 (2505)	2655 (2655)
		MIN.	310 (450)	310 (450)	310 (450)	370 (500)	370 (500)	370 (500)	370 (500)
E	Glue Lap Width	MAX.	70 (70)	70 (70)	70 (70)	100 (100)	100 (100)	100 (100)	100 (100)
		MIN.	(40)	(40)	(40)	(40)	(40)	(40)	(40)
F	Box Height	MIN.							
G	Sheet Width (standard regular feed)	MAX.	1542 (1542)	1542 (1542)	1542 (1542)	2092 (2092)	2092 (2092)	2092 (2092)	2092 (2092)
		MIN.	365 (365)	365 (365)	365 (365)	650 (650)	650 (650)	650 (650)	650 (650)
	Sheet Width(Skip feed)	MAX.	2200 (2200)	2200 (2200)	2200 (2200)	2500 (2500)	2500 (2500)	2500 (2500)	2500 (2500)
	Max. Machine Speed (Sheet/Min)	MAX.	180 (150)	150 (120)	120 (120)	100 (100)	100 (100)	100 (100)	100 (100)



# PRODUCT CORRUGATOR

- The full line corrugator in size range 1800mm ~2500mm.
- The maximum production speed 350 meter/minute.
- Integrated control system and high efficiency of short order change.



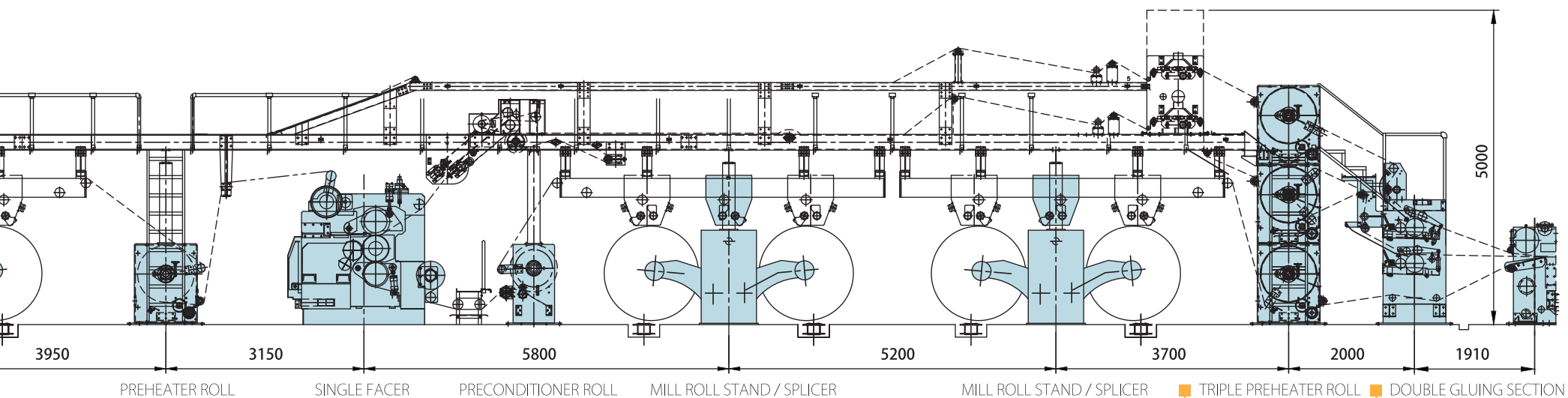
MILL ROLL STAND & SPLICER



SINGLE FACER



WET-ENDS



WET-ENDS

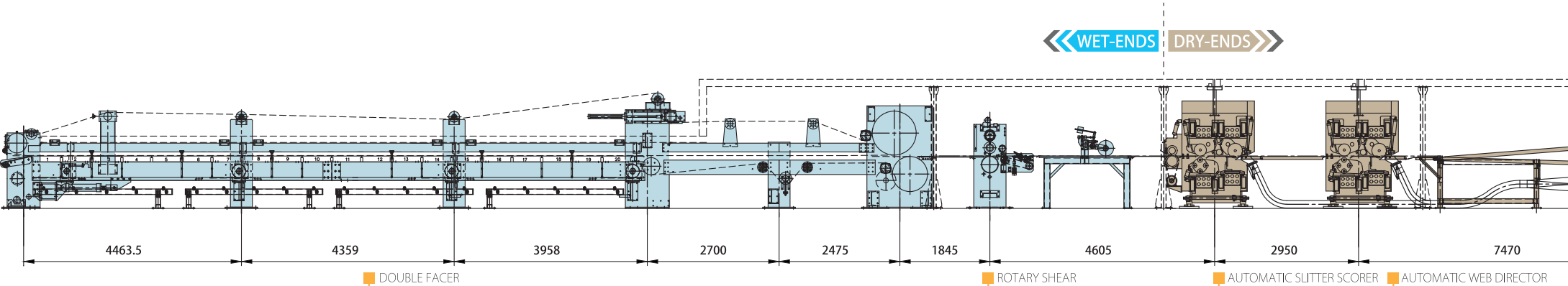


TRIPLE PREHEATER ROLL



DOUBLE GLUING SECTION

# PRODUCT CORRUGATOR



DOUBLE FACER



ROTARY SHEAR

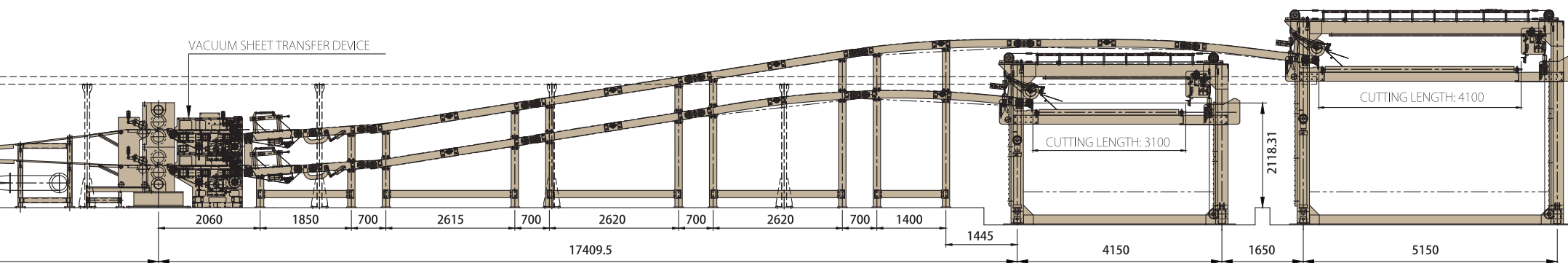


AUTOMATIC SLITTER SCORER



AUTOMATIC WEB DIRECTOR





■ DUPLEX N.C. CUTTER

■ DUPLEX DOWN STACKER

■ DUPLEX DOWN STACKER



DUPLEX N.C. CUTTER



DUPLEX DOWN STACKER



DUPLEX DOWN STACKER

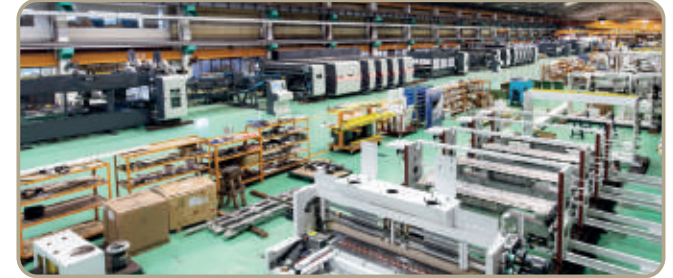
## RESEARCH AND DEVELOPMENT



## PROCESSING AND MANUFACTURING



## FINISHED ASSEMBLY



In house parts machinery & quality control which over 70% are produced by own CNC machine center.  
Complete spare parts organization and continue after service support for all models.

TIENT CHIN YU MACHINERY MANUFACTURING CO., LTD.  
NO. 42, SANTEH STREET, RU-CHU DIST. TAO-YUAN. TAIWAN. R.O.C.  
TEL: 886-3-3544888 FAX: 886-3-3544889 / 886-3-3542336

